

Garden Design Project for a naturalistic planting site

852342 Planting Design and Horticultural Ecosystem Management

Dan Wu, Pascal Nowak, Sara Mehrabi, Sun Kyung Park



Swapping Lawns for Meadows

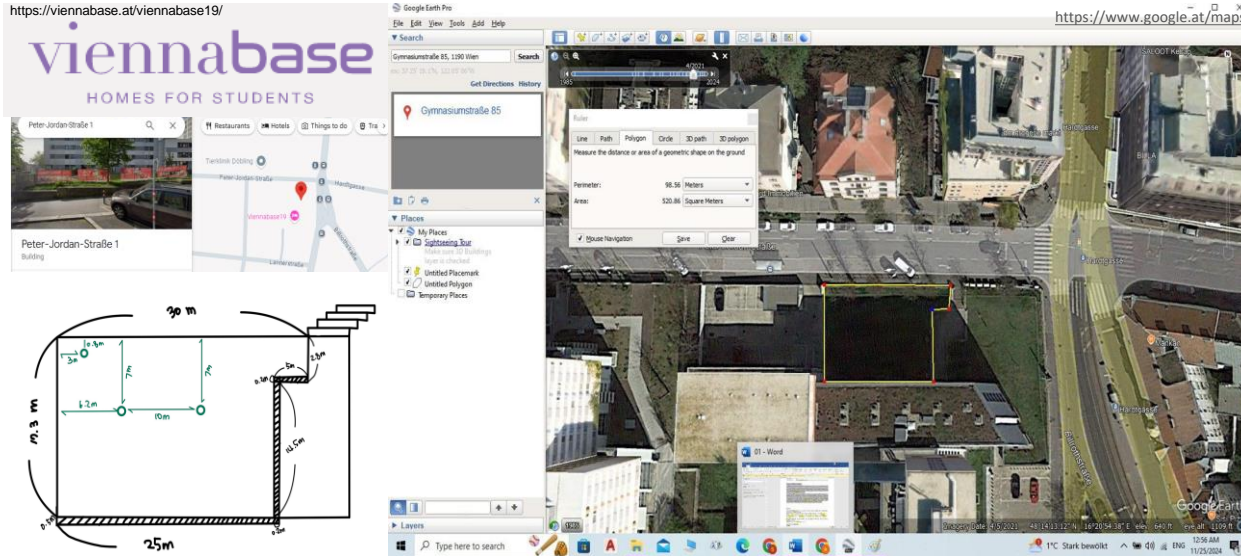
Table of contents

1. Location Choice and Conditions
2. A First Design Concept
3. Design Plan and Details
4. Site Management Plan
5. References



Swapping Lawns for Meadows

1. Location Choice and Conditions



“North facing lawn, with a slight slope in front of a student accommodation, adjacent to a parking lot, bordered by a fence towards the street direction, build on an elevated level reached by stairs.”

Swapping Lawns for Meadows

1. Location Choice and Conditions

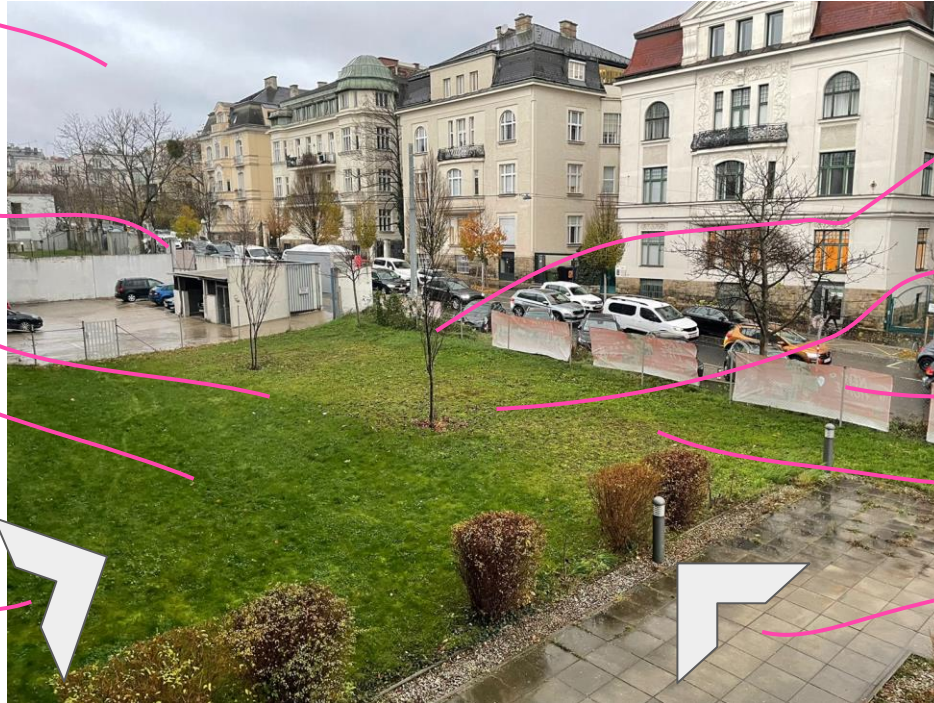
No direct sunlight exposure in winter, reflection by building; direct sunlight in summer

Parking lot view to cover up

Average nutrient abundance

Lawn, dominated by *Lolium perenne*, *Trifolium repens* and *Trifolium pratense*

Viewing axis from the student accommodation



Three *Prunus serrulata* entative

Mild slope, elevation increasing towards the street

Fence to cover up

Dry sandy slightly loamy soil

Viewing axis entry point after entering from staircase

Swapping Lawns for Meadows

2. A First Design Concept

Transformation of the location into something:

Naturalistic

Seasonal

Dynamic

Relaxing

Soft

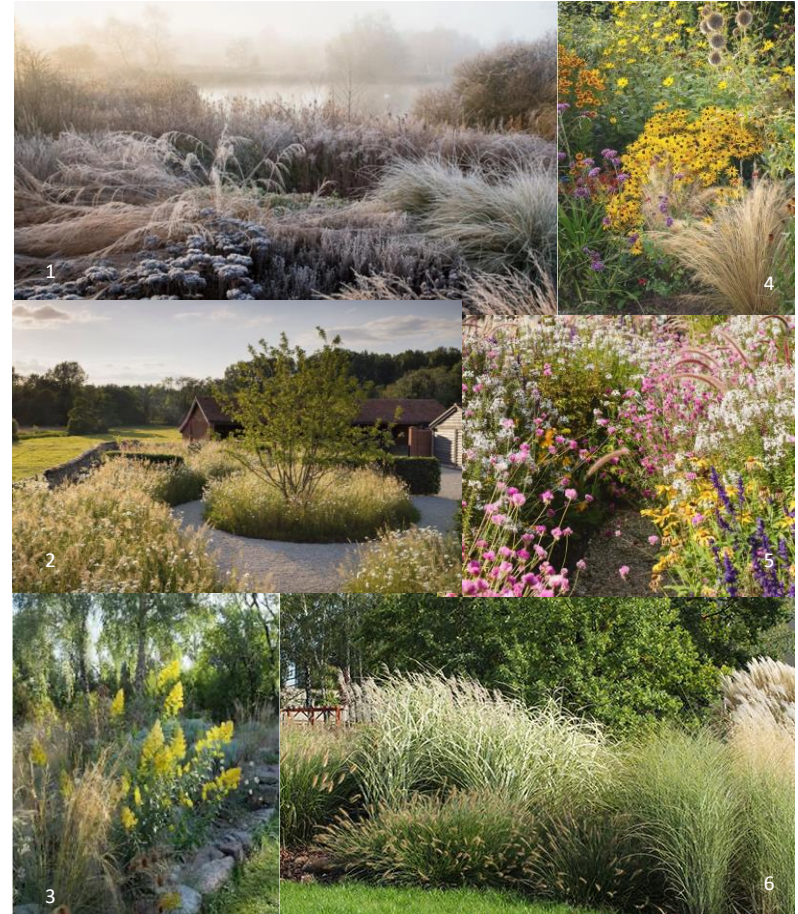
Surprising

Easy to maintain

Die meisten Gärten sind Dokumente der Andachtslosigkeit, mit denen das Leben gelebt wird - Karl Foerster

Most gardens are documents of the devotionlessness with which life is lived - Karl Foerster

A soft, earthy-toned color palette of greens, beige, browns, and subtle pops of pink, purple, and yellow with elements like ornamental grasses, wildflowers, and textured foliage will reinforce its naturalistic and low-maintenance style.



1. <https://ph.pinterest.com/pin/404479610257463032/>

2. <https://www.colmjooseph.co.uk/east-suffolk-garden>

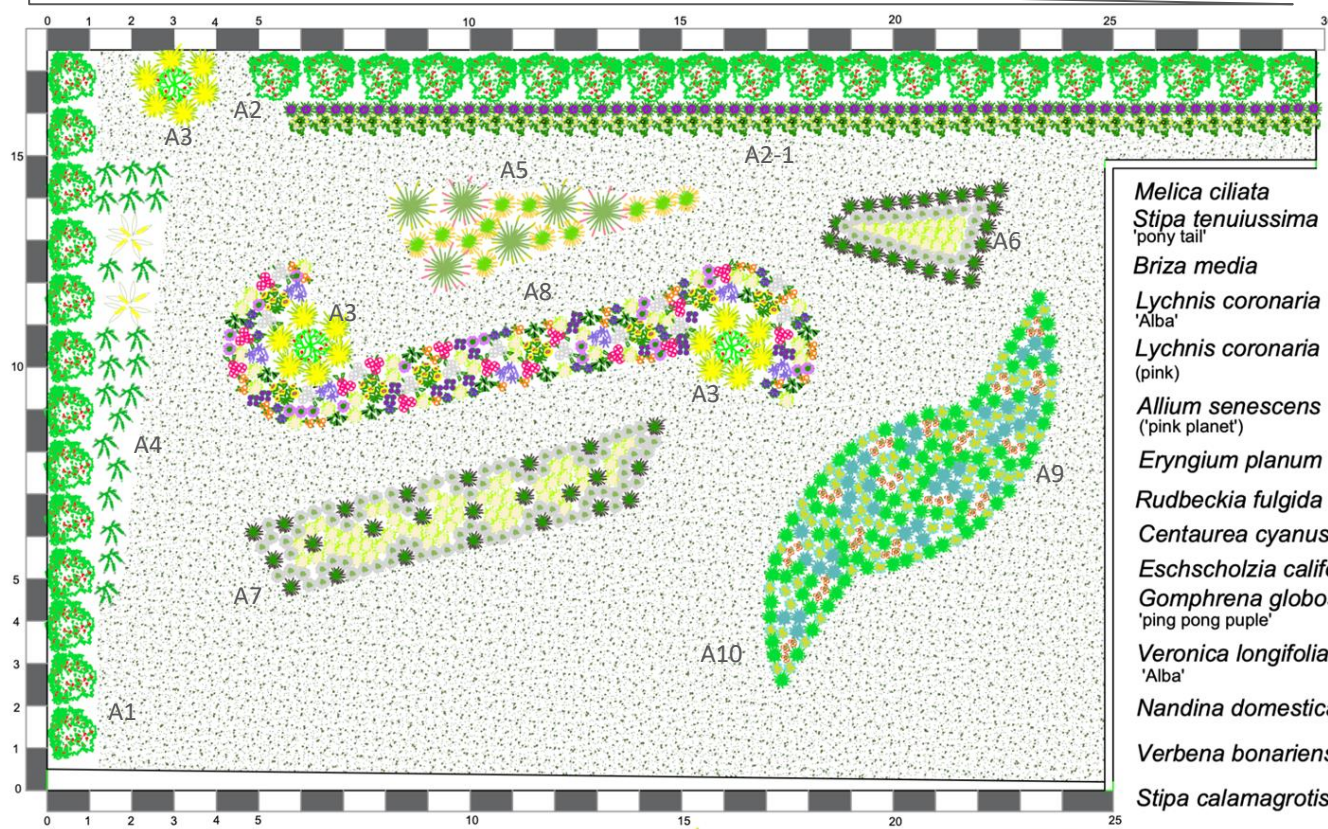
3. <https://galasearch.de/plants/15600-solidago-speciosa>

4. <https://www.mardengardeners.uk/blog/rudbeckiafulgidagoldsturm>

5. <https://yardzen.com/yzblog/meadowscaping-your-yard>

6. <https://stock.adobe.com/at/images/growth-of-various-species-of-ornamental-grass/228279106>

3. Design Plan and Selection of Species



Melica ciliata
Stipa tenuissima
 'pony tail'

Briza media

Lychnis coronaria
 'Alba'

Lychnis coronaria
 (pink)

Allium senescens
 ('pink planet')

Eryngium planum

Rudbeckia fulgida

Centaurea cyanus

Eschscholzia californica

Gomphrena globosa
 'ping pong purple'

Veronica longifolia
 'Alba'

Nandina domestica

Verbena bonariensis

Stipa calamagrotis

Solidago speciosa

Gaura lindheimeri
 "Cool Breeze"

Gaura lindheimeri

A6 (24) A7 (84)

A6 (18) A7 (51)

A6 (23) A7 (22)

A8 (13)

A8 (15)

A8 (21)

A8 (7)

A8 (8)

A8 (16)

A8 (29)

A8 (23)

A8 (14)

A1(13) A2 (20)

A2-1 (70)

A3 (18)

A4 (2)

A4 (10)

A4 (11)

Map Guide	
Name	Area
A1	20.41 m ²
A2	31.02 m ²
A2-1	19.53 m ²
A3	3.14 m ²
A4	12.97 m ²
A5	10.29 m ²
A6	7.29 m ²
A7	17.62 m ²
A8	23.02 m ²
A9	12.13 m ²
A10	12.13 m ²

Tanacetum corymbosum A2-1 (42)
Festuca amethystina A9(18)/A10(18)
Festuca ovina A9(42)/A10(42)
Festuca valesiaca A9(37)/A10(37)
Calamagrostis x acutiflora A5 (12)

Pennisetum orientale
 'Tall tails'
Pennisetum orientale
 'Karley Rose'
Allium amethystinum
 'Red Mohican'

A5 (3)
 A5 (3)

Ground cover :
Lolium perenne
Trifolium repens
Trifolium pratense

A9 (24) A10 (24)

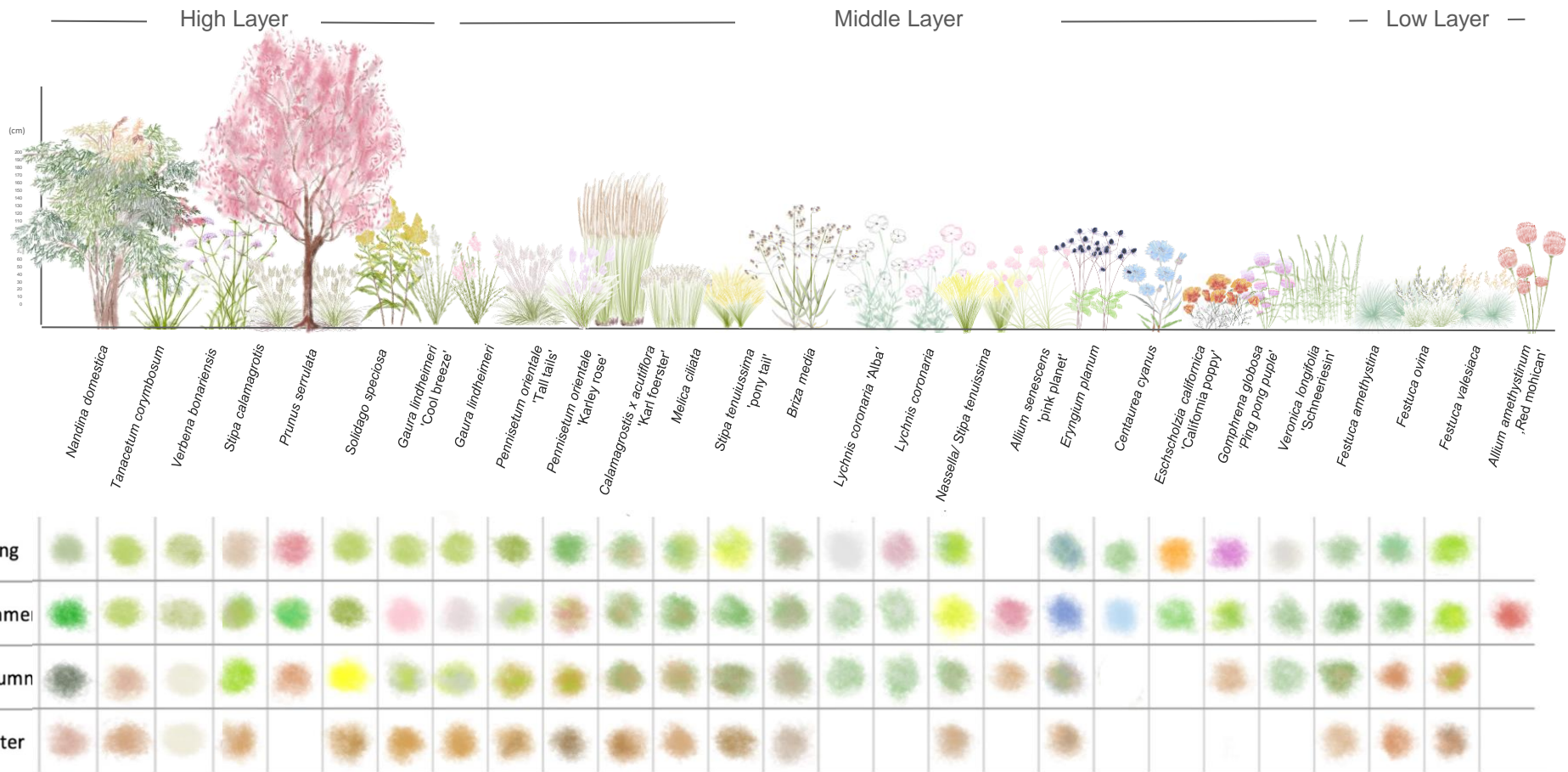
Prunus serrulata



A3 (3)

0-1 = 1m

3. Design Plan and Selection of Species



Swapping Lawns for Meadows

4. Site Management Plan

1. Seasonal mowing of the lawn (1-3 times a year)
2. Irrigation on demand
3. Cutting at least the tall grasses (after the winter latest early spring)

Stipa calamagrostis, *Calamagrostis x acutiflora* 'Karl Foerster', and *Pennisetum orientale*

4. Annual management and reseeding

Rely on natural reseeding by leaving seed pods of *Centaurea cyanus* (Cornflower) and *Eschscholzia californica* (California Poppy) to mature and disperse; for *Gomphrena globosa* ('Ping Pong Purple'), collect seeds in late summer and replant annually, as it does not self-seed reliably in colder climates.

Low maintenance ensures a longliving and enjoyable garden experience!



Swapping Lawns for Meadows

5. References

- Staudengärtnerei Gaißmayer; <https://www.gaissmayer.de/>
- Piet Oudolf, Noel Kingsbur (2013). *Planting: a new perspective*. Timber Press

